



STONE

your NATURAL choice



www.K2STONE.ca

K2 STONE - your NATURAL choice

K2 Stone is one of the largest producers and distributors of natural stone products for the building industry in Western North America. We specialize in thin stone veneers, full bed masonry stone, cap stones, flag stone, hearths, mantels, landscape stone as well as a variety of custom products. We employ a fully vertically integrated business model which ensures unique products at competitive prices and outstanding service to our customers.



HEAVY EQUIPMENT IN THE OCEAN PEARL QUARRY



NANAIMO DISTRIBUTION FACILITY

As both the quarryer and distributor, K2 Stone is able to uphold industry leading quality standards, and provide an unmatched level of customization. We have 6 quarries and 2 production facilities. With stock of every type of thin stone we make on hand and ready to ship, we can meet your deadlines.

As a company, we strive to exceed industry standards, support the communities where we live and work, and operate in an environmentally responsible manner.

Learn more @ www.K2STONE.ca





your NATURAL choice



K2 STONE is GREEN

Did you know that K2 Stone is a GREEN building material and can earn your project LEED points?

LEED (Leadership in Energy and Environmental Design) is a catalogue of standards for environmentally sustainable construction, developed by the Green Building Council. K2 Stone qualifies your project under two separate sections:

MRc5.2 for Regional Materials **EQc4.4 for Low-Emitting Materials**

K2 Stone is currently the only stone supplier listed in the Built Green catalogue, and qualifies your project under five different sections. Built Green is an initiative supported by the Home Builders Association, of which, K2 Stone is a member.

3-7: Natural cementitious stone/stucco/brick or fiber cement siding – complete or combination thereof for 100% of exterior cladding. (4 points)

3-15: Deck or veranda surfaces made from low maintenance materials - deck surfaces do not need maintenance of any kind, including painting, for a minimum of 5 years. (2 points)

3-27: Domestically sourced natural granite, stone or recycled glass (30% of content) countertops in 100% of the kitchen. (2 points)

3-28: Natural granite, stone, recycled glass or concrete countertops for all other countertop areas. (1 point)

7-12: Install permeable paving materials for all driveways and walkways. (3 points)





your NATURAL choice

WHY CHOOSE NATURAL STONE OVER ARTIFICIAL STONE?

DURABILITY

Natural Stone will not fade or wear over time; it often looks better with age.

UNIQUENESS

Natural stone has its own unique characteristics; no two pieces are exactly alike because none of them come from a mold.

WORKABILITY

Natural Stone can be shaped, trimmed, and chiseled to take on any specifications without losing color or integrity.

NATURAL COLOR

The vibrancy and life of natural stone cannot be captured or duplicated by any painted product

COST EFFECTIVENESS

At K2 Stone, we list our natural stone profiles at prices that are competitive with artificial stone products, and invite you to compare

GREEN

Our product and practices are recognized for their environmental stewardship by the Canada Green Building Council and the Built Green Society of Canada.

DON'T SETTLE FOR IMITATION



WHAT IS THIN STONE?

K2's thin stone is real stone, cut to approximately 1" thick, making it light enough to be installed as an adhered veneer. It offers the ease of application without losing the uncompromising beauty and durability of natural stone. It does not require special mechanical fastening or foundations, and because of its size and weight, costs less to transport and install than full thickness masonry. All of K2 Stone's thin veneers are offered with matching corners.



BENEFITS OF REAL THIN STONE

1. Uncompromising beauty
2. Unmatched by imitation
3. Does not fade
4. Safe to pressure wash
5. All natural, eco-friendly
6. Ideal for Interior and Exterior
7. No efflorescence
8. LEED and Built Green points
9. Adds value to your property
10. No Volatile Organic Compounds (VOC's)



STONE VENEER AS IT IS APPLIED





OCEAN MIST LEDGESTONE



BLACK PEARL LEDGESTONE



NATURAL LEDGESTONE



ELK RIDGE



AUTUMN GOLD



AUTUMN FLAME



ECHO VALLEY



SUN RIVER



CAMAS CREEK



SPRING VALLEY



ARBUTUS FIELDSTONE



TOFINO SKY FIELDSTONE



CARMANAH COBBLES



PACIFIC ASHLAR - COURSED



PACIFIC ASHLAR - PITCHED RANDOM



THIN COBBLES



OKANAGAN SUMMIT



ARBUTUS - NATURAL BLEND

OCEAN MIST LEDGESTONE

A huge quarry deposit of rustic blue/gray slate has led to the development of K2's Ocean Mist. Ocean Mist lends itself to contemporary west coast styles with clearly defined vivid lines. The horizontal grain is evident in this ledgestone.

**AVAILABLE IN BOTH THIN VENEER
(with corners) & FULL BED**





BLACK PEARL LEDGESTONE

The veins of the mountain produce striking white quartz lines which highlight K2's Black Pearl LedgeStone. This profile effectively blends the popularity of a ledgeStone style with the demand for color consistency. It is rich in texture, yet soft in appearance, which promotes a pleasing neutrality to exterior or interior applications.

**AVAILABLE IN BOTH THIN VENEER
(with corners) & FULLBED**





OCEAN PEARL NATURAL LEDGESTONE

Natural Ledgestone is K2's most popular style. It is only found on the outer crust of the quarry, where exposure to water, oxygen and minerals produces a warm earth-tone color pallet. The horizontal edge-grain profile makes this stone ideal for shaping, which allows greater flexibility when installing.

**AVAILABLE IN BOTH THIN VENEER
(with corners) & FULL BED**





ELK RIDGE

Elk Ridge draws its colouring from the wooded mountains, rolling hills, and winding rivers of Montana, blending chocolate browns, dark greys and tan colors. Square and rectangular in shape, Elk Ridge embodies the look that has made Montana stone so popular.

**AVAILABLE IN BOTH THIN VENEER
(with corners) & FULL BED**





AUTUMN GOLD

Quarried in northwest Montana, Autumn Gold is characterized by its rectilinear orientation. Hard sharp lines blend with soft colors to create Autumn Gold's distinctive look. Gold, tans and earthy tones prevail.

**AVAILABLE IN BOTH THIN VENEER
(with corners) & FULLBED**





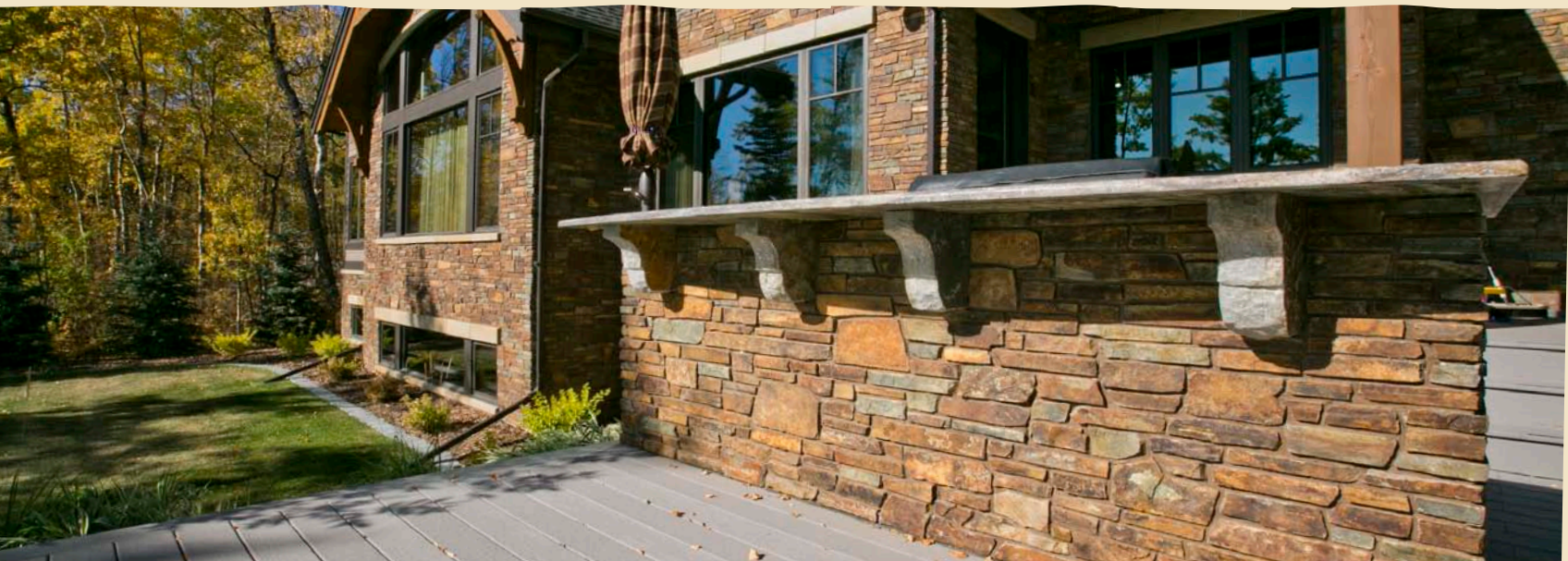
AUTUMN FLAME

Autumn Flame is a narrow, linear ledgerstone, combining dark reds, browns, greys and copper colors. It's the darkest of K2's Montana stone selections. Autumn Flame is unmatched in the industry with its bold color and distinctive shape.

**AVAILABLE IN BOTH THIN VENEER
(with corners) & FULLBED**



*Blended with Autumn Flame Flagstone Jumpers

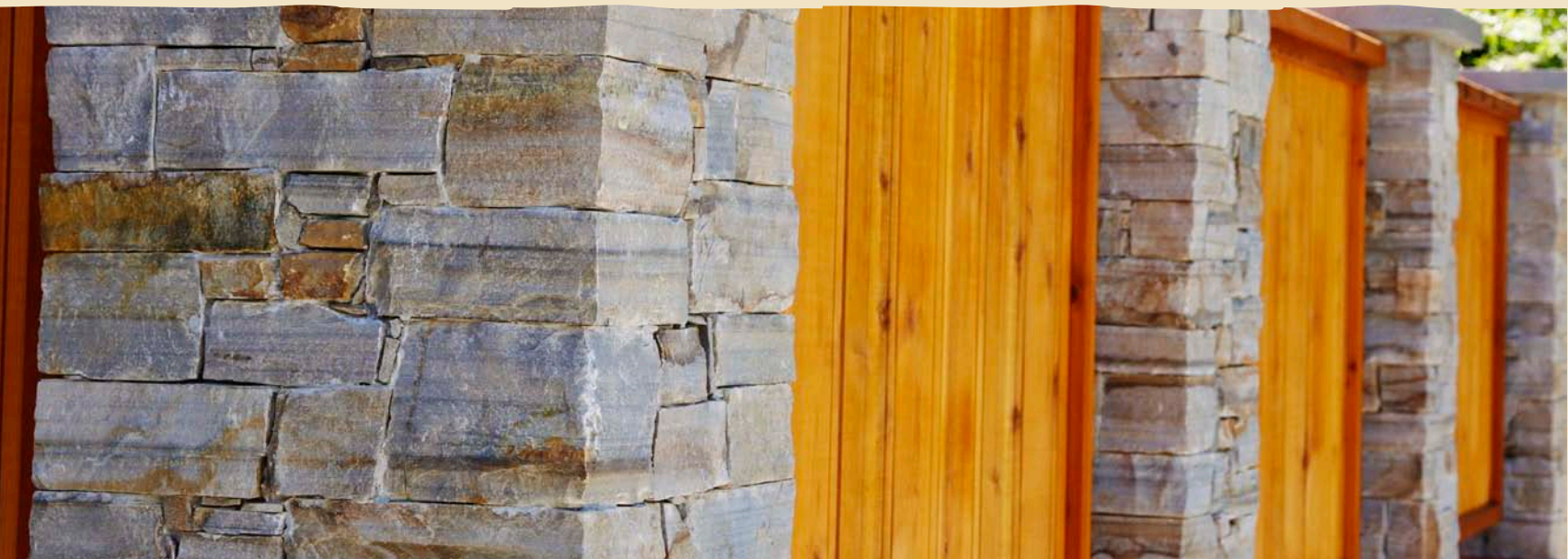




ECHO VALLEY

Echo Valley Ledge stone encompasses subtle earth tones from various browns, beiges and gold. This product provides a clean contemporary look that has long horizontal lines and ledgy striations.

**AVAILABLE IN THIN VENEER
(with corners)**

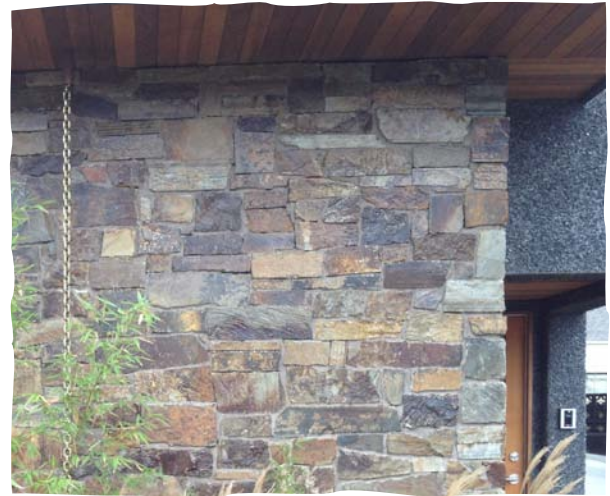




SUN RIVER

Sun River draws from a deep robust color pallet that includes burnt orange, deep rusty reds and gold. Crystallized mineral deposits found within this blend provide rich unique character. Warm color variations are inspired by the Sun River in central Montana.

**AVAILABLE IN THIN VENEER
(with corners)**





CAMAS CREEK

Camas Creek embodies traditional characteristics with a color mix of softer tans, browns and smoky undertones. This rectangular stone draws its elegance from the natural surrounding beauty of Glacier National Park, Montana.

**AVAILABLE IN THIN VENEER
(with corners)**





SPRING VALLEY

Spring Valley is a blend of 85% Black Pearl Ledge stone and 15% Natural Ledge stone. Black Pearl is predominantly dark grey in color with white quartz striations. The addition of Natural Ledge adds a few brown and earth tones which ties-in well with other colors, especially natural wood.

**AVAILABLE IN THIN VENEER
(with corners)**





ARBUTUS FIELDSTONE

K2 Stone's unique fieldstone, Arbutus, is found deep within the natural fissures of the quarry. Random in shape and rich in color, Arbutus Fieldstone can either be used on its own to create bold architectural elements, or combined with a ledgerstone for a warm, comfortable blend of shapes and colors.

**AVAILABLE IN BOTH THIN VENEER
(with corners) & FULL BED**



TOFINO SKY FIELDSTONE

Another K2 fieldstone is the blue-gray Tofino Sky which comes from the same quarry deposits as Ocean Mist. Random shapes and rich tones add character and beauty to your architectural designs.

**AVAILABLE IN BOTH THIN VENEER
(with corners) & FULLBED**





CARMANAH COBBLES

Shaped and softened by powerful currents, K2's Carmanah Cobble Thin stone is used to recreate a classic look found on thousands of fireplaces, chimneys, and cottages world-wide. Elliptical in shape and uniform in color, this profile creates a rustic feel.

AVAILABLE IN THIN VENEER (with corners)



PACIFIC ASHLAR RANDOM

Our versatile blue-grey Pacific Ashlar can reproduce the look, texture and strength of an old style castle stone, or the sleek and contemporary lines found on many of today's modern homes and restaurants. The occasional white quartz striation helps set Pacific Ashlar apart from other dimensional stone products. Pieces are diamond cut to heights of 2,4,6 and 8 inches.

**AVAILABLE IN BOTH THIN VENEER
(with corners) & FULLBED**



PACIFIC ASHLAR COURSED

A coursed installation has emerged as a very popular, quite contemporary configuration for Pacific Ashlar. Rows of stone with a specified height are run in a horizontal course, often with either alternating or juxtaposing sized courses atop one another. Pieces are diamond cut to heights of 2,4,6 and 8 inches.

**AVAILABLE IN BOTH THIN VENEER
(with corners) & FULLBED**





THIN COBBLES

Our lightly tumbled Thin Cobbles provide a timeless, clean, contemporary look. Each cobble is cut to a specific size, tumbled and hand split to 1" thick. Thin Cobbles are available in 4x8, 6x8 and 8x8 inch sizes.

AVAILABLE AS A THIN VENEER

Thin Cobbles are commonly used as accent or trim pieces around openings such as windows and fireplaces. Their softened shapes transition hard lines between architectural elements smoothly.



CAPPING



PREMIUM CAPPING

- 3," 4," 6" and 8" standard sizes
- Cut top
- 2" thick
- Flamed front edge
- Available in custom sizes



STANDARD CAPPING

- 3," 4," 6" and 8" standard sizes
- Split top
- Thickness varies: 1 3/4" - 2 1/4"
- Flamed front edge
- Available in custom sizes



NEWCASTLE CAPPING

- Sandstone
- 3," 4," 6" and 8" standard sizes
- Cut top
- 2" thick
- Flamed front edge
- Available in custom sizes



CUT TOP



SPLIT TOP



FLAMED FRONT



CUT FRONT



PREMIUM POOL CAPPING

CUSTOM CAPPING

Capping can be ordered with many variables including cut ends, specified lengths, as well as custom widths and thicknesses. To learn more about our production capabilities and capacity for custom work, please ask your sales representative.

ACCENTS AND TRIMS



KEYSTONES



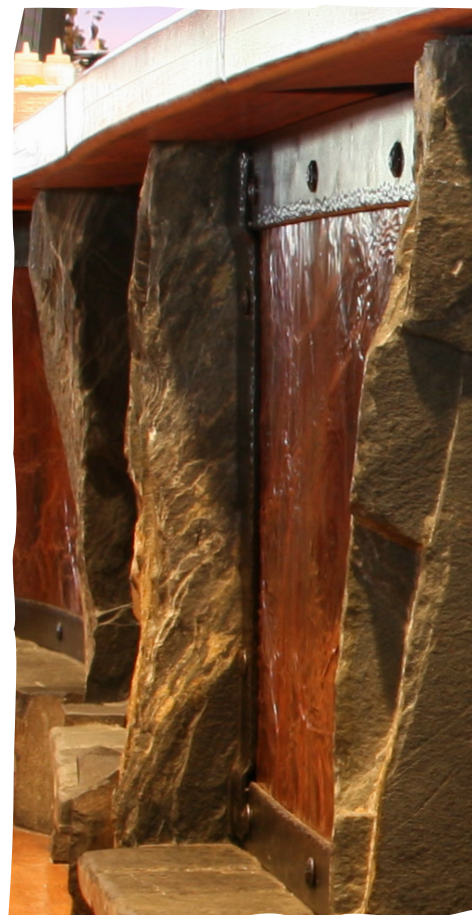
UPRIGHTS AND LINTELS



CORBELS

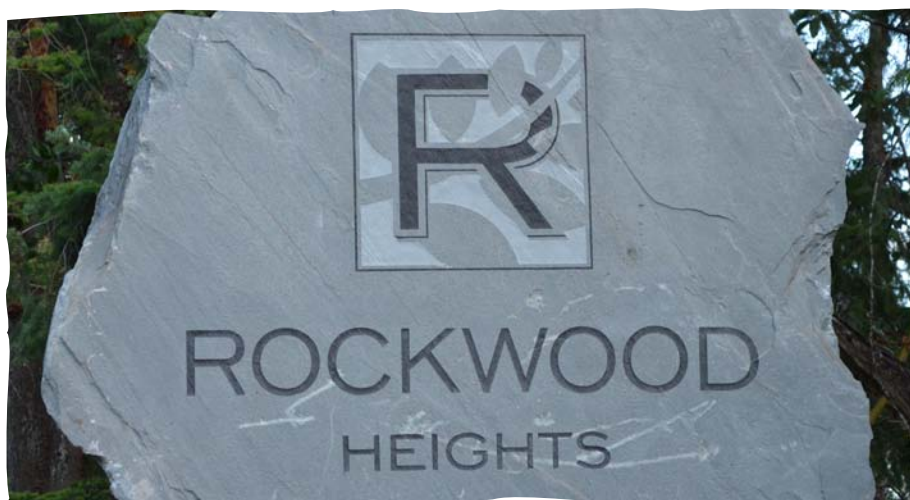


ACCENTS AND TRIMS



OCEAN PEARL COLUMNS

Put the finishing touch on any project with K2 Stone's assortment of trim and accent stones. Whether you desire the matching consistency of Ocean Pearl slate for each of our profiles, the unique color pallet of Montana rocks or the effective contrast of our Newcastle Sandstone, we can produce what you need - cobbles, capping, keystones, and more.



CUSTOM SANDBLASTING

K2 Stone produces an infinite array of unique custom products; your design possibilities are virtually limitless. Our sales representatives will work with you throughout the design process to ensure your completed project is a timeless masterpiece.

HEARTHES, MANTELS *and* CUSTOM



1 PIECE OCEAN PEARL HEARTH W/ NATURAL TOP AND FRONT



CUSTOM SOLID HEARTH, LINTEL AND SUPPORTS



1 PIECE OCEAN PEARL HEARTH W/ CUT TOP AND NATURAL FRONT

HEARTHES AND MANTELS

Available with a cut / split / natural / flamed / bush hammered / honed or polished surface in solid slab pieces. From 2" thick up to 9' long! Nothing finishes a fireplace like a natural stone hearth.

When selecting a hearth, the top and edge treatments determine the finished look. K2 cut stone hearths can be ordered with specific dimensions, an uncut natural top or front will naturally vary in thickness to some degree.

FLAMING

Flaming allows for specific sizing while retaining the rough look of uncut stone. The process involves "popping" the surface with heat. Small pieces often blow out, resulting in a more natural look, while overall thickness and size remain intact.

(below: hearth with flamed top and front edge)



FLAGSTONE *and* COBBLES



OCEAN PEARL COBBLES

OCEAN PEARL COBBLES

Available in 8x8," 6x8" and 4x8" dimensions, Ocean Pearl full bed cobbles can be sand-set to recreate an old world look. They are offered in two thicknesses, 2 1/2" for sand-set applications and 1" thick for mortared applications. These are among the most beautiful and durable pavers anywhere.

FLAGSTONE

K2 Stone offers two varieties of flagstone: Ocean Pearl Slate and Autumn Flame Argillite. Flagstone is available in multiple thicknesses and size configurations. It can be installed in either a sand or mortar bed, depending on the application and desired appearance. Flagstone makes an excellent ground cover.

Industry Terms:

"Stand up Flagstone" - Large format flagstone often called "Select" which must be shipped *standing up* because pieces are often too large to *lay down* on a pallet without protruding past the edges.

"Patio" or "Lay down" flagstone is small enough to fit on a pallet.



AUTUMN FLAME FLAGSTONE



OCEAN PEARL FLAGSTONE

STAIRS

AUTUMN GOLD STAIRS

Autumn Gold Stairs offer exceptionally consistent tread surfaces without the need for cutting. These stairs have brown and gold coloring, matching well with wood or accenting a hardscape. Large dimension slabs also available.



AUTUMN GOLD STAIRS

8" CUT WALLSTONE STAIRS

Cut Wallstone Stair treads are completely unique in the industry. With exact rise heights and a naturally non slip tread, 8" cut wallstone stairs combine natural beauty with a safe surface.



OCEAN PEARL 8" CUT WALLSTONE STAIRS

OCEAN PEARL STAIRS

Very natural, rustic looking stairs. Coloring blends exactly with the rest of the Ocean Pearl line. Large scale slabs are also available.



OCEAN PEARL NATURAL STAIRS

Decorative and Retaining WALLSTONE



AUTUMN GOLD RETAINING BLOCK



AUTUMN FLAME 2.25-3" PATIO



OCEAN PEARL WALLSTONE



ELK RIDGE RETAINING BLOCK



OCEAN PEARL CASTLE ROCK



OCEAN PEARL 8" CUT WALLSTONE



OCEAN PEARL SAUCERS



AUTUMN GOLD RETAINING BLOCK



your NATURAL choice

K2 Stone offers many options for decorative and retaining wall construction. Mortar set or dry-stack styles, as well as, both hand moveable and large format pieces are available. K2 Stone's wallstone options have something for every application.



FIRE PIT CONSTRUCTED USING AUTUMN GOLD MATERIAL



GURGLER AND POND ROCKS



OCEAN PEARL COLUMN

UNIQUE STONE FOR EVERY APPLICATION

From fire pits to water features, columns, slabs and sandblast signs, K2 Stone offers a myriad of options for hardscapes. To see more products and explore some more possibilities, visit us online or in our showrooms.

www.K2STONE.ca



DECORATIVE SANDBLASTING



OCEAN PEARL STEPPING STONES



GAS BAR FEATURING OCEAN MIST



RETAIL FRONTAGE FEATURING NATURAL LEDGESTONE

COMMERCIAL PROJECTS

K2's natural stone products are well suited for commercial installations. Their versatility and varied applications offer visual continuity to project design.



MUNICIPAL BUILDINGS - FULL BED COBBES AND OCEAN MIST LEDGESTONE

SURFACE PREPARATIONS FOR INSTALLATION OF NATURAL THINSTONE VENEER

EXTERIOR FRAMED WALLS

Note - Installation applies to both wood and steel stud framed walls. (See Figure #2)

Installation applies both to wood and steel stud framed walls. Material, size and spacing needs to be in compliance to local building codes and/or any manufacturers structural requirements.

An exterior sheathing material is required to provide a base for the application surface. Cover sheathing with weather resistant vapor barrier. Lap vapor barrier at the joints by a minimum of 4 inches. Install 2.5 lb galvanized expanded metal lath with galvanized nails or screws. Fasteners should be installed at a minimum of 6 inches on center vertically and 16 inches horizontally. It is important to note that in a corner application, the expanded metal lath needs to wrap the corner completely and overlap the expanded metal lath to a minimum of 4 inches. Apply 1/2 inch thick scratch coat, allow 24 hours to dry, and your Natural Thinstone Veneer can now be applied.

INTERIOR FRAMED WALL

Note - A wall board is required to provide a base for the application surface. (See Figure #2)

Install a vapor barrier and 2.5lb galvanized expanded metal lath over wall board with recommended galvanized nails or screws. Expanded metal lath over concrete board is not necessary unless local building codes require it. Concrete board that is properly installed can have Natural Thinstone Veneer applied right to it.

Fasteners should be installed at a minimum of 6 inches on center vertically and 16 inches on center horizontally. It is important to note that in a corner application, the expanded metal lath needs to lap over the expanded metal lath that is applied to each adjacent wall surface by a minimum of 4 inches. Apply 1/2 inch thick scratch coat, allow 24 hours to dry, and apply the Natural Thinstone Veneer.

EXISTING CONCRETE MASONRY WALL

Note - Including sealed and or painted concrete and brick. (See Figure #1)

It is important to verify with a builder or engineer that an existing wall is strong and sound. Sandblast the surface to remove any paint or sealer if required. Rinse thoroughly. Once the surface has dried, Natural Thinstone Veneer can be applied directly to the clean surface. If this application is not reasonable, another option is to apply expanded metal lath to the painted or sealed surface with concrete screws or nails. Then apply a 1/2 inch scratch coat and allow 24 hours to dry.

NEW CONCRETE MASONRY WALL

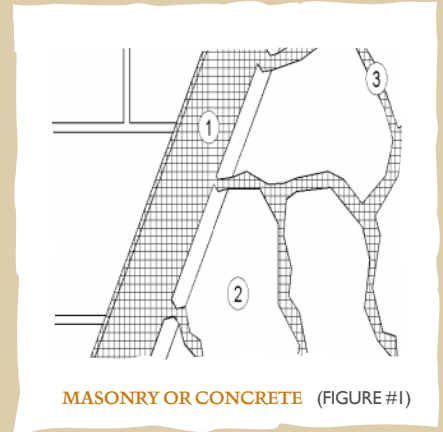
Note - Including new concrete block and/or newly poured concrete walls. (See Figure #1)

No special preparation is required for a concrete block wall. When working with a poured concrete wall, it is important to take extra time to examine the entire surface as it may have areas of form release agents on the concrete surface. To remove this oil, contact an industry professional for recommended cleaning solutions and/or score the area with a wire brush. After these surfaces are cleaned, rinsed and allowed to dry, the Natural Thinstone Veneer can be installed directly to the concrete wall.

INSULATED CONCRETE FORMS

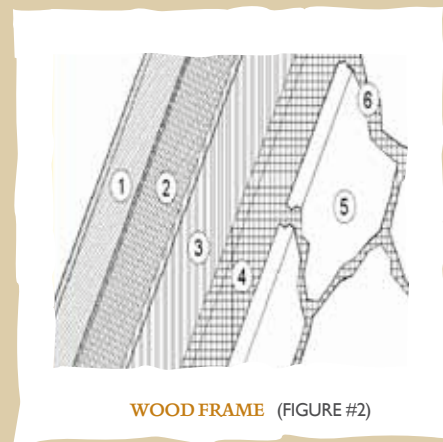
(See Figure #1)

Apply vapor barrier. Next install the expanded metal lath as specified by the manufacturer of the insulated forms. Concrete fasteners that secure the 2.5 lb galvanized expanded metal lath to the wall, will need to be long enough to penetrate clear through the insulation and secure into the cured poured concrete wall. Apply a 1/2 inch thick scratch coat, allow 24 hours to dry, and then apply your Natural Thinstone Veneer.



MASONRY OR CONCRETE (FIGURE #1)

- 1 Mortar applied directly to untreated masonry, concrete or stucco
- 2 Natural stone veneer
- 3 Mortar joint.



WOOD FRAME (FIGURE #2)

- 1 Sheathing
- 2 Building paper or vapor barrier
- 3 Galvanized metal lath
- 4 Mortar
- 5 Natural Thinstone Veneer

Installation of Natural Thinstone Veneer

INSTALLATION REQUIREMENTS

(Read prior to installation)

- All exterior surfaces are required to have a water resistant barrier installed. (See local building codes.)
- If an expanded metal lath is used, it must be corrosion resistant.
- When using expanded metal lath in your application, a 1/2 inch thick scratch coat must be applied.
- It is recommended to allow a scratch coat at least 24 hours to dry.
- Safety Glasses and a dust mask should always be worn when cutting or trimming any K2 Stone products.
- K2 Stone recommends type 'S' mortar for all Natural Thinstone installations.
- The use of an acrylic bonding agent mixed in with the mortar is recommended to add strength to the installation.
- It is recommended that 100% of the back of each stone be covered by a minimum of 1/2 inch of mortar.
- If corner pieces are used in the application, the corner pieces should be installed prior to any flats.
- Use of an epoxy or thin set should be limited to interior applications.
- It is suggested that 48 hours after application, the stonework be watered down and a cleaning agent applied to remove any dirt.
- All K2 Stone products are washed prior to packaging. Dust may settle on the product during transportation, which must be removed prior to installation.
- All local building codes must be adhered to at all times.

HOW TO INSTALL NATURAL THIN STONE VENEER

- 1 Properly prep the surface as previously described.
- 2 Mix Mortar (3 parts sand to 1 part type 'S' cement) to a creamy consistency. The use of an acrylic bonding agent mixed in with the mortar at a ratio of 5 ounces to each 30 kilogram bag of type 'S' cement is recommended to add bond strength to the installation.
- 3 Ensure surfaces are clean of dirt, sand, or loose particles.
- 4 Trowel Mortar scratch coat on wall approximately 1/2 inch thick over metal lath. Allow 24 hours to dry.
- 5 Slightly dampen the scratch coat in order to create a suction bond effect with the Natural Thinstone veneer.
- 6 Apply a thin coat of mortar onto the backside of stone. (See photo #3) This creates a tighter bond to the wall.
- 7 Press stone into mortar, rotating slightly, forcing some of the mortar to squeeze out freely. Any mortar forced out beyond the finished joint can be troweled to finish the joint.
- 8 Use a grout bag or trowel to fill all the joints. As the mortar stiffens, tool to the desired depth and brush off all excess.

HOW TO CLEAN:

Excess mortar and film may be removed using a certified cleaning solution (contact an industry professional for recommendations). Always choose a non-conspicuous area to test cleaning solution prior to application. Rinse thoroughly with clean water.

HOW TO SEAL:

Stone may be sealed with a good quality breathable sealer only after thoroughly curing. This takes 3 to 4 weeks on inside work. Follow manufacturer's directions for the application of a sealer. Sealers must be periodically reapplied, especially on exterior applications, and may alter the natural coloring of the stone. Always choose a non-conspicuous area to test sealer prior to application.

TYPICAL THIN STONE APPLICATIONS



FIELDSTONE



LEDGESTONE



CARMANAH COBBLES

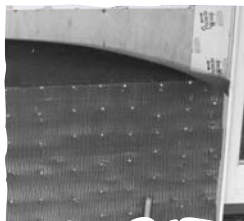


PHOTO 1 - Application of galvanized lath.



PHOTO 2 - Application of scratch coat to surface of exterior wall



PHOTO 3 - Application of mortar onto Natural Thinstone Veneer



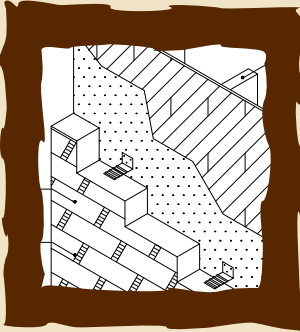
PHOTO 4 - Application of Natural Thinstone Veneer



your NATURAL choice

Find More Online

www.K2STONE.ca



CAD Drawings

A collection of CAD drawings, including one for rain screen applications, is posted online.



Master Specification

Available in both Canadian and US formatting standards, our specs make it easy to use K2 Stone.



Testing

K2 Stone posts all testing results on the web.



Application Examples

K2 Stone has a huge photo collection of commercial and residential applications. Get ideas or provide reassurance for a client all online!

NANAIMO

T 250.722.2420
TF 866.722.2420

930 Maughan Road
Nanaimo, BC V9X 1J2

VICTORIA

T 250.727.7625

876 Langford Parkway
Victoria, BC V9B 2P3

VANCOUVER

T 604.598.3611
TF 877.598.3611

4391 King George Blvd
Surrey, BC V3S 0L2

KELOWNA

T 250.807.7625
TF 866.323.3035

#1 1610 Innovation Dr
Kelowna, BC V1V 2Y8

EDMONTON

T 780.907.6556

9337 63 Avenue
Edmonton, AB T6E 0G2

CALGARY

T 403.255.1133
TF 866.948.0333

#15, 777 - 64TH Ave SE
Calgary, AB T2H 2C3

KALISPELL

T 406.755.7714

3154 Hwy 2 East
Kalispell, MT 59901

Testing



Testing of K2 Stone material has been carried out by certified 3rd party professionals. Copies of testing results are available online.

www.K2STONE.ca
866-722-2420

OCEAN PEARL METAMORPHIC SLATE TESTING RESULTS

Density and Absorption, ASTM C 97	0.10%
Compressive Strength, ASTM C 170	124 Mpa ~ 18000 psi
Resistance of Rock to Freezing and Thawing (CRD - C- 114-92)	0.01%
Colour Range	Browns, oranges, golds, greens, greys, and blues

AUTUMN GOLD TESTING RESULTS

Density and Absorption, ASTM C 97	0.40%
Compressive Strength, ASTM C 170	151.4 Mpa ~ 21900 psi
Resistance of Rock to Freezing and Thawing (CRD - C- 114)	0.01%
Colour Range	Gold, tans, and earthy tones prevail

AUTUMN FLAME TESTING RESULTS

Density and Absorption, ASTM C 97	0.34%
Compressive Strength, ASTM C 170	141.2 Mpa ~ 20500 psi
Resistance of Rock to Freezing and Thawing (CRD - C- 114)	0.03%
Colour Range	Dark reds, browns, greys and coppers

ELK RIDGE TESTING RESULTS

Density and Absorption, ASTM C 97	0.36%
Compressive Strength, ASTM C 170	146.5 Mpa ~ 21000 psi
Resistance of Rock to Freezing and Thawing (CRD - C- 114)	0.01%
Colour Range	Chocolate browns, dark greys, and pale oranges

Standard Products Guide

THIN VENEER

PRODUCT	DESCRIPTION	PALLET DIMENSION	APPROX. PACKAGE WEIGHT	APPROX. COVERAGE	UNIT
OP* Ledgestone Veneer Flats (Natural, Ocean Mist, Black Pearl)	Cut back - 3/4" - 1 1/4" thick min 3" x 6" flat edge grain - 10-13 lbs/sqft	4' x 4' x 16"	1200 lbs	100 sqft / pallet	Sq Ft
OP* Fieldstone Veneer Flats (Arbutus, Tofino Sky, Carmanah Cobbles)	Cut back - 3/4" - 1 1/4" thick min 3" x 6" flat face grain - 10-13 lbs/sqft	4' x 4' x 16"	1200 lbs	100 sqft / pallet	Sq Ft
Thin Cobble Veneer	3/4" - 1 1/2" thick, split back 4" x 8", 6" x 8", 8" x 8" sizes - tumbled	4' x 4' x 16"	1200 lbs	100 sqft / pallet	Sq Ft
Pacific Ashlar Veneer	Cut top and bottom 3/4" - 1 1/4" thick 2", 4", 6", 8" heights - random lengths	4' x 4' x 16"	1200 lbs	100 sqft / pallet	Sq Ft
Autumn Gold & Elk Ridge Veneer Flats	Cut back - 3/4" - 1 1/4" thick min 3" x 6" flat edge grain 10-13 lbs/sqft	4' x 4' x 16"	1200 lbs	100 sqft / pallet	Sq Ft
Autumn Flame Veneer Flats	Cut back - 3/4" - 1 1/4" thick min 1" x 6" face - 10-13 lbs / sqft	4' x 4' x 16"	1200 lbs	100 sqft / pallet	Sq Ft
Thin Stone Veneer Corner	Min 2" height w/ 4" outside return Thin Stone specs	40" x 4' x 16"	800 lbs	50 lnft / pallet	Ln Ft
Autumn Flame Veneer Corner	Min 1" height. w/ 4" outside return Thin Stone specs	40" x 4' x 16"	800 lbs	50 lnft / pallet	Ln Ft

FULL BED, RETAINING BLOCK & WALLSTONE

PRODUCT	DESCRIPTION	PALLET DIMENSION	APPROX. PACKAGE WEIGHT	APPROX. COVERAGE	UNIT
OP* Full Bed Ledgestone	4" thick +/- 1/2" - min 6" length - min 3" height	48" x 48" x 36"	4000 lbs	40-45 sqft / ton	Ton
OP* Full Bed Ledgestone Cut Corner	Min 2" height - 6" outside return - ledgestone specs	48" x 48" x 36"	3200 lbs	50 lnft / pallet	Ln Ft
Autumn Gold 3-6" Ledgestone	3- 6" thick, min 6" length, min 2" height	48" x 42" x 36"	4000 lbs	35-40 sqft / ton	Ton
Autumn Gold 6-12" Ledgestone	6-12" thick, min 6" length, min 4" height	48" x 42" x 36"	4000 lbs	20-25 sqft / ton	Ton
Autumn Gold 12-16" Dry Stack Retaining Block	12-16" thick, min 12" length, min 4" height	48" x 42" x 36"	4000 lbs	10-15 sqft / ton	Ton
Autumn Gold 16-24" Dry Stack Retaining Block	16-24" thick, min 12" length, min 9" height	48" x 42" x 36"	4000 lbs	7-10 sqft / ton	Ton
Autumn Gold Large Retaining Block	> 24" in bed depth	48" x 42" x 36"	4000 lbs	4-6 sqft / ton	Ton
Elk Ridge 3-6" Ledgestone	3- 6" thick, min 3" length, min 2" height (square and rec shapes)	48" x 42" x 36"	4000 lbs	35-40 sqft / ton	Ton
Elk Ridge 3-6" Random Ledgestone	3-6" thick, random shapes	48" x 42" x 36"	4000 lbs	35-40 sqft / ton	Ton
Elk Ridge 12-16" Dry Stack Retaining Block	6-12" thick, min 6" length, min 4" height	48" x 42" x 36"	4000 lbs	10-15 sqft / ton	Ton
Elk Ridge 16-24" Dry Stack Retaining Block	16-24" thick, min 6" length, min 4" height	48" x 42" x 36"	4000 lbs	7-10 sqft / ton	Ton
Elk Ridge Large Retaining Block	24" thick, min 16" length, min 6" height	48" x 42" x 36"	4000 lbs	4-6 sqft / ton	Ton

*OP abbreviates Ocean Pearl.

FULL BED, RETAINING BLOCK & WALLSTONE CONT.

PRODUCT	DESCRIPTION	PALLET DIMENSION	APPROX. PACKAGE WEIGHT	APPROX. COVERAGE	UNIT
OP* Wall Stone	Smallest piece about 3" high x 10" long Largest piece about 10" high x 24" long Bed depth between 6" - 12" (thick) All pieces will be stack-able	48" x 48" x 36"	4000 lbs	25 sqft / ton	Ton
OP* Cut Wall Stone	Available in 8" and 12" heights, 10"-12" depth, random lengths, cut top and bottom	48" x 48" x 36"	4000 lbs	12 sqft / ton	Ton

FLAGSTONE

PRODUCT	DESCRIPTION	PALLET DIMENSION	APPROX. PACKAGE WEIGHT	APPROX. COVERAGE	UNIT
OP* Stand-up (select) Flagstone 2"	3 sqft area per piece minimum	48" x 48" x 36"	4000 lbs	70 sqft / ton	Ton
OP* Stand-up (select) Flagstone 1.5" minus	3 sqft area per piece	48" x 48" x 36"	4000 lbs	100 sqft / ton	Ton
OP* Lay-down (patio) Flagstone 2"	1-3 sqft area per piece	48" x 48" x 36"	4000 lbs	70 sqft / ton	Ton
OP* Lay-down (patio) Flagstone 1.5' minus	1-3 sqft area per piece	48" x 48" x 36"	4000 lbs	100 sqft / ton	Ton
Autumn Flame Lay-down (patio) Flagstone - 5 sizes from 3/4" - 5" thick	Pieces up to 2 sqft each	48" x 42" x 36"	4000 lbs	Varies by thickness	Ton
Autumn Flame Lay-down (patio) Tile Flagstone 3/8" - 3/4" thick	Pieces up to 2 sqft each	48" x 42" x 36"	4000 lbs	200 sqft / ton	Ton
Autumn Flame Stand-Up (select) Flagstone - 5 sizes from 3/4" - 5" thick	Pieces 2 sqft and greater	48" x 42" x 36"	4000 lbs	Varies by thickness	Ton
Autumn Gold Lay-down (patio) Tile Flagstone 3/8" - 3/4" thick	3/4" thick, variety of sizes, limited availability.	48" x 42" x 36"	4000 lbs	200 sqft / ton	Ton
Elk Ridge 1-2" Lay-down (patio)	(1-2") / (2-3") / (3-5") thick.	48" x 42" x 36"	4000 lbs	100-120 sqft/ton	Ton
Elk Ridge 2-3" Lay-down (patio)	Pieces are 1 sqft and greater			70-90 sqft / ton	
Elk Ridge 3-5" Lay-down (patio)				45-60 sqft / ton	

TUMBLLED STONE

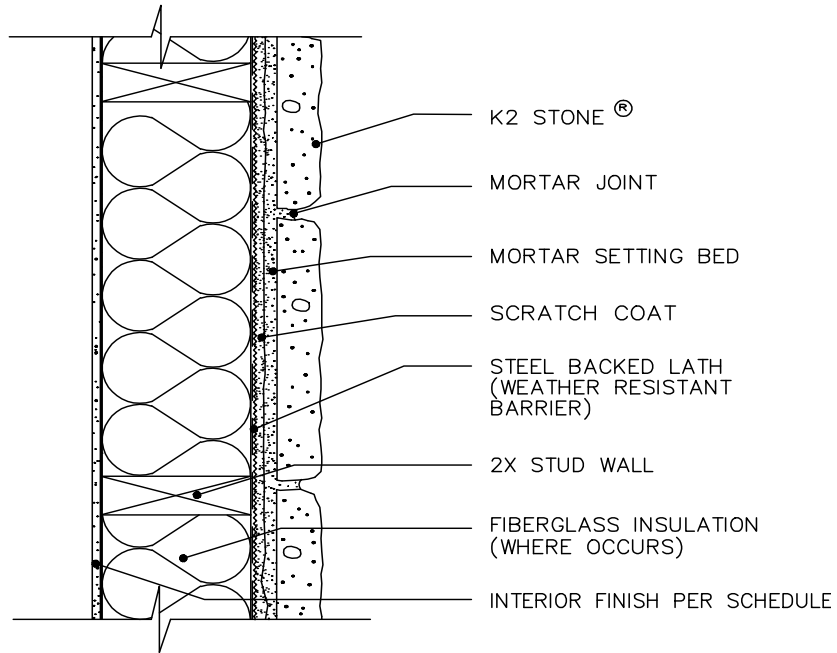
PRODUCT	DESCRIPTION	PALLET DIMENSION	APPROX. PACKAGE WEIGHT	APPROX. COVERAGE	UNIT
Antique Saucers	2" - 3" Thick - 4" - 6" diameter Random circular shapes - Tumbled	4' x 4' x 36"	4000 lbs	400 - 500 pcs / pallet	Ton
Full Bed Cobbles	2 1/2" Thick - (4"x8"), (6"x8"), (8"x8") in area Tumbled	4' x 4' x 26"	4000 lbs	100 sqft / pallet	Ton
OP* Stepping Stones	Minimum 10" up to 30" in diameter 2" - 3.5" thick - Random shapes - Tumbled	4' x 4' x 36"	4000 lbs	100-110 pcs/ pallet	Ton

CAP STONE

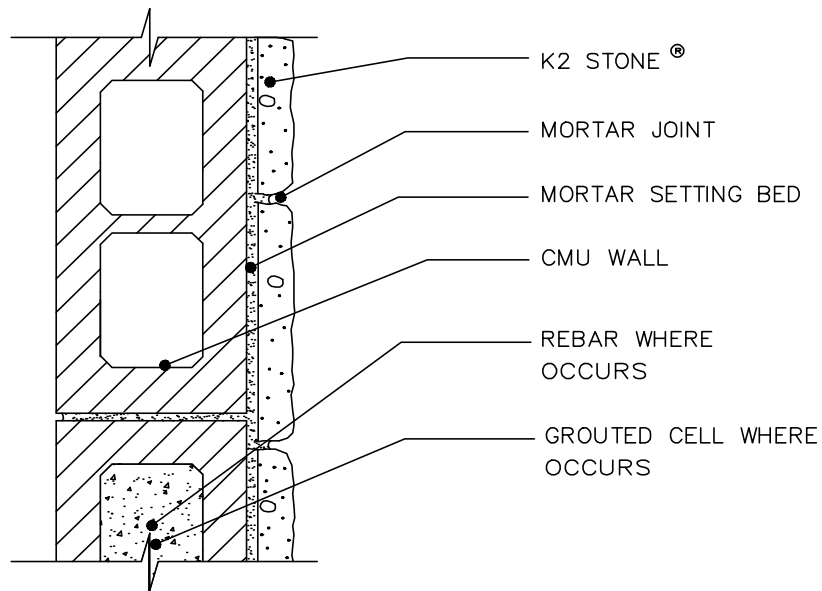
PRODUCT	DESCRIPTION	WIDTHS	LENGTHS	THICKNESS
Premium Capping	Cut top / bottom / back. Flamed Front Edge	3", 4", 6", 8" Standard Widths	Random lengths 14" and greater	2"
Standard Capping	Split top and bottom, Cut Back Flamed Front Edge	3", 4", 6", 8" Standard Widths	Random lengths 14" and greater	2"
Newcastle Capping	Cut top / bottom / back. Flamed Front Edge	3", 4", 6", 8" Standard Widths	Random lengths 14" and greater	2"

*OP abbreviates Ocean Pearl.

K2 STONE CAD

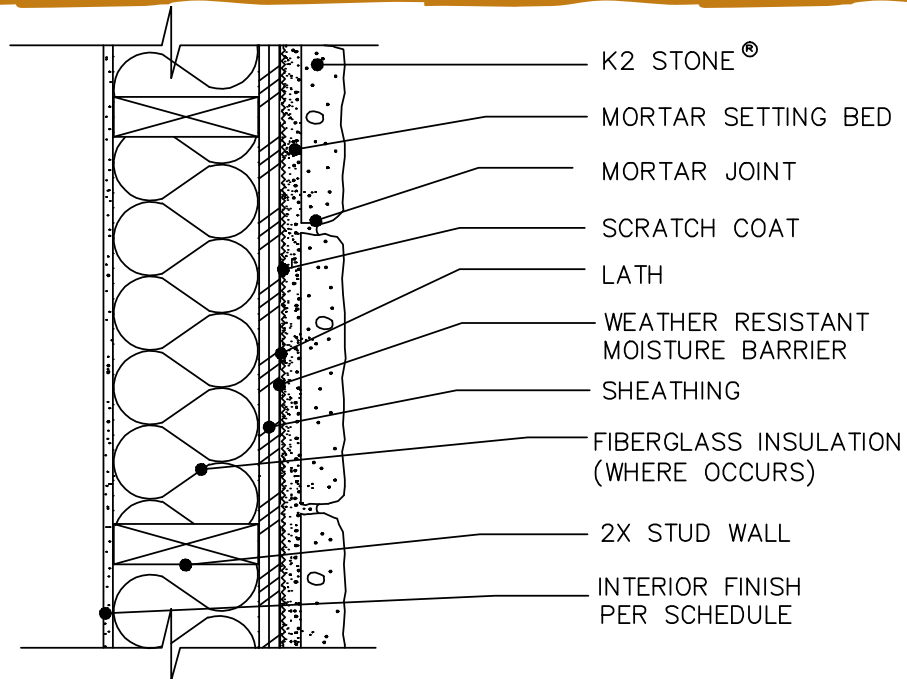


○ K2 STONE[®] OVER OPEN WOOD STUD FRAMING
SCALE: N.T.S.

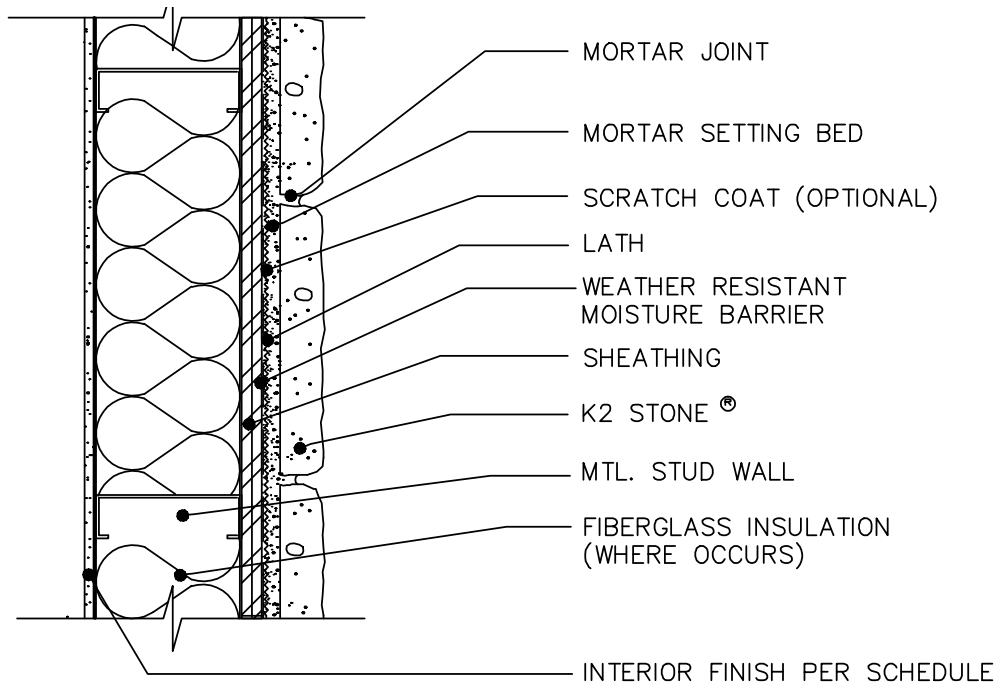


○ K2 STONE[®] OVER CEMENT BLOCK WALL
SCALE: N.T.S.

K2 STONE CAD

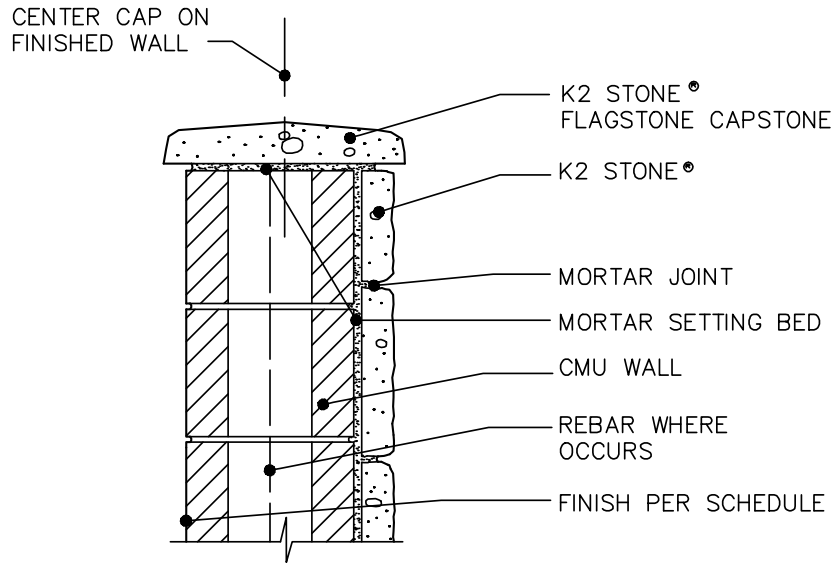


K2 STONE[®]
 OVER SHEATHING OVER WOOD STUD FRAMING
 SCALE: NTS



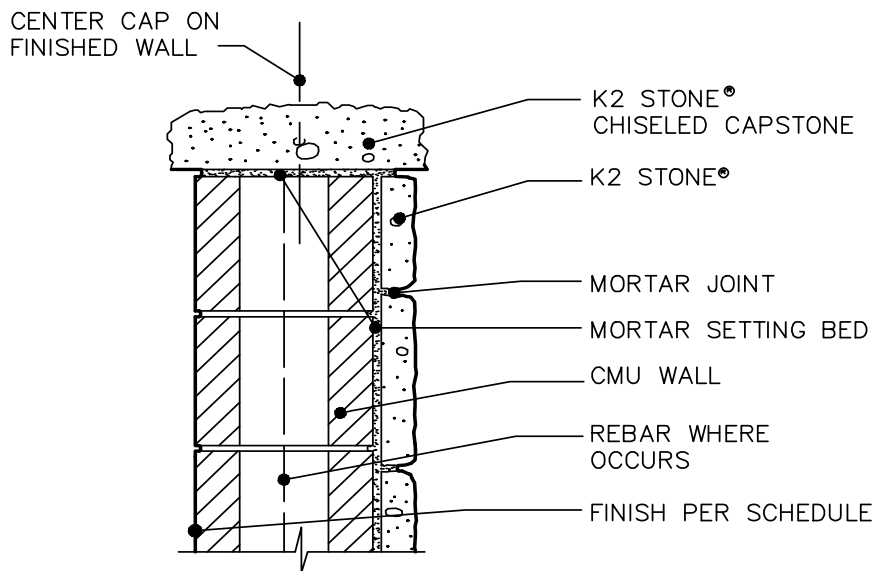
K2 STONE[®]
 OVER SHEATHING W/ MTL STUDS
 SCALE: N.T.S.

K2 STONE CAD



K2 STONE®
FLAGSTONE WALL CAP

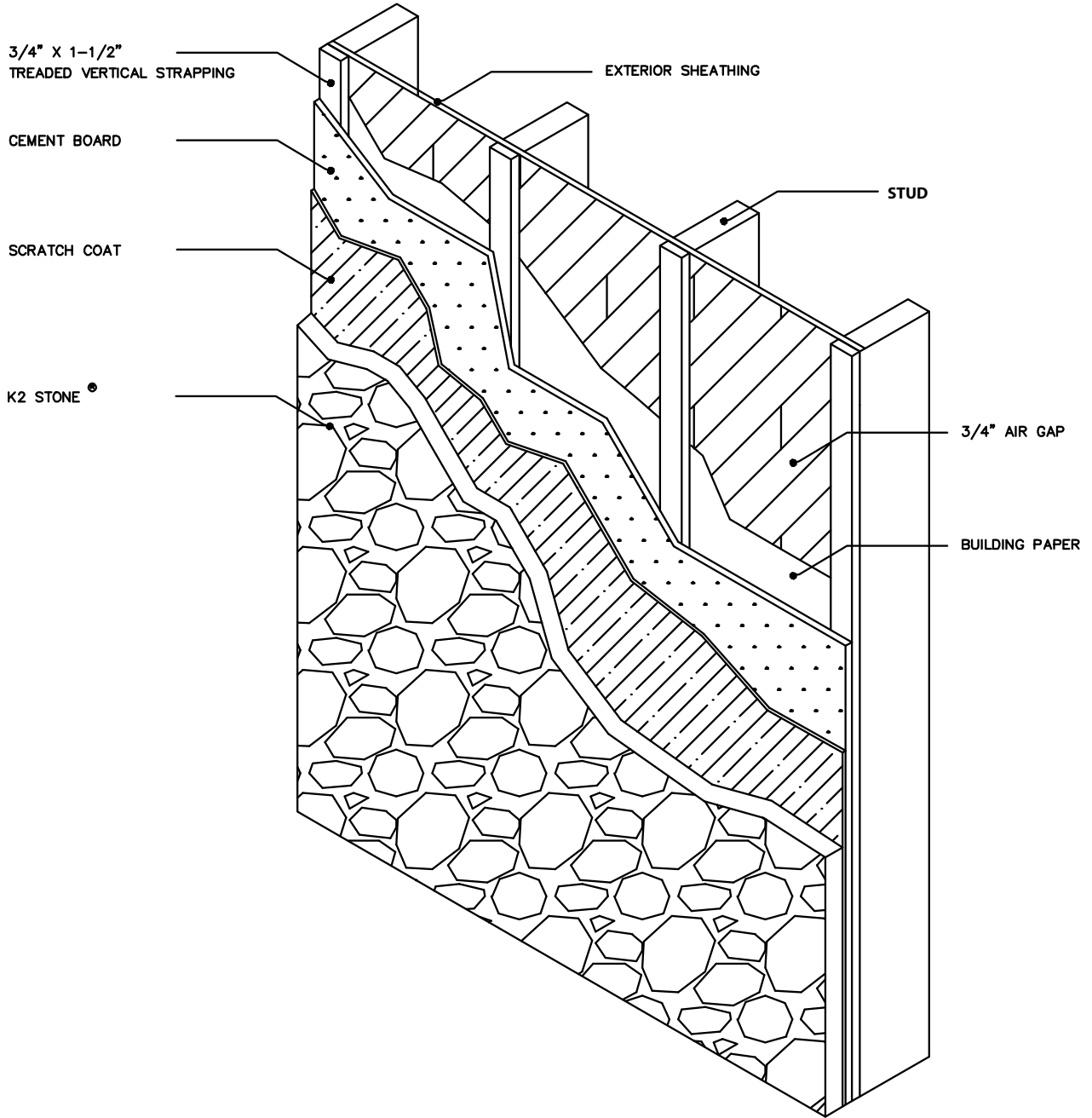
SCALE: 1 1/2" = 1'-0"



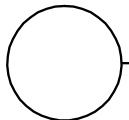
K2 STONE®
WALL CAP

SCALE: 1 1/2" = 1'-0"

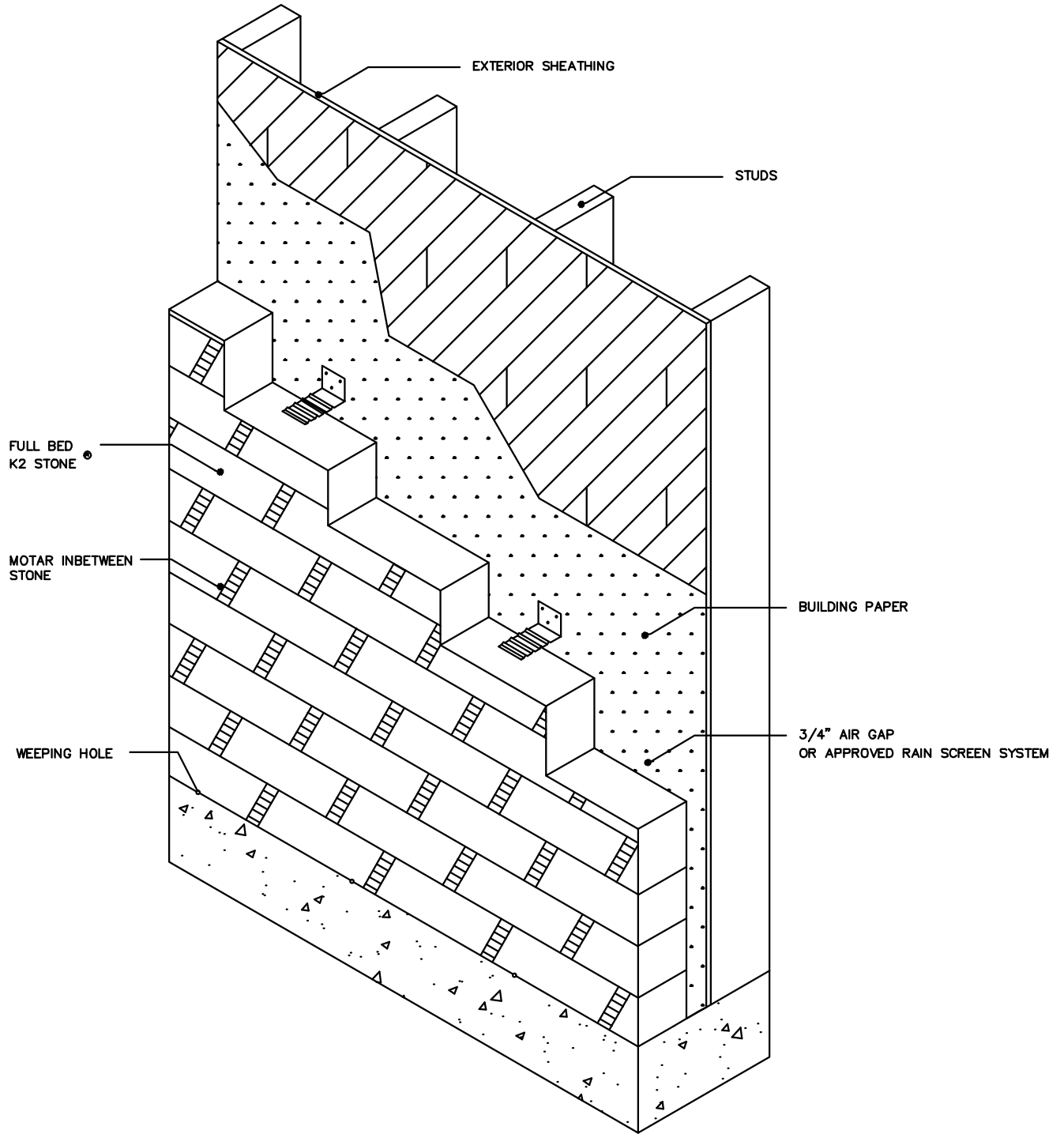
K2 STONE CAD



K2 STONE®
OVER RAIN SCREEN



SCALE: N.T.S.



K2 STONE[®] OVER RAIN SCREEN (FULL BED)

SCALE: N.T.S.

